

## We have got it covered

Buying any forklift truck represents a large investment and one you want to protect, that is why Bendi are proud to offer a comprehensive After Sales operation that is second to none.

Any forklift is only as good as the team supporting it so you have the added peace of mind knowing that Bendi employ some of the most highly skilled and dedicated Service Engineers in the materials handling industry.

- Over 50 expertly trained engineers guaranteed to be with you in under four hours and with an industry leading "first time fix" rate.
- Midlands based manufacturing and spare parts holding is supported by strategic regional spares stores and engineers van stock.
- Web based management software can be configured for larger fleets of machines, enabling tracking of service, maintenance and breakdown costs.
- The world's largest hire fleet of articulated forklift trucks is available to cater for planned operational peaks or unplanned emergency hire.
- Bendi Driver Training (BDT) offers a comprehensive range of courses including - articulated forklift truck training, conversion for experienced operators, conventional forklift and warehousing trucks as well as Supervisors Health and Safety awareness seminars. Courses are held at our Training Centre in the Midlands or onsite on the customers premises.



+44 (0)1527 527411  
info@bendi.co.uk  
www.bendi.co.uk

Translift Bendi Ltd.  
22, Padgets Lane, South Moons Moat,  
Redditch, Worcestershire, B98 0RB

*Bendi*

## *B3 Series*

*B312, B315, B318, B320*

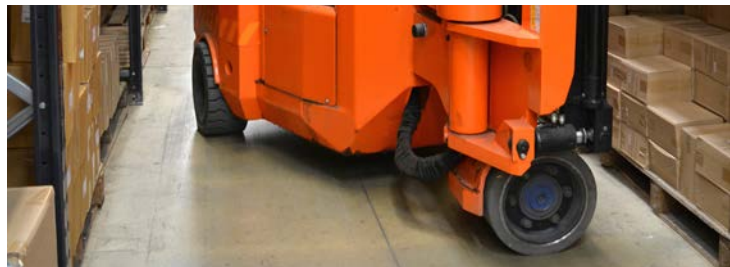
*Designed to Give  
Optimal Aisle  
Performance*

[www.bendi.co.uk](http://www.bendi.co.uk)



Being first has its upside: Understanding drive and balance allowed us to patent the best drive systems for all different applications.

Single direct front wheel drive allows the best possible traction in the most compact format for aisle widths whilst offering cost savings over rear wheel drive.



The innovative award winning B3 model is capable of working in the smallest possible aisles whilst retaining its unique ability to work outside.

The unique 3 wheel front wheel drive offers a fantastic driving experience and the design of the articulation system creates the best possible aisle performance. With the very latest technologies utilised throughout the range, the B3 offers massive performance and operational benefits over traditional reach, VNA or counterbalance operations.

### Introducing the new powerhouse of the 3-wheel range - the Bendi B320

With a rated lift capacity of 2000kgs, and lift height of up to 10m, the B320 is a high performance machine capable of working in aisles as small as 1.6m and with ample power for loading/unloading duties. With full AC control and motors, the new B320 offers increased efficiency through faster lift and lowering speeds.

- 2000kgs rated lift capacity and 10m maximum lift
- Unique Safe Central Drive Style
- Most spacious Operators cab in class
- Large comfortable foot well and low step for easy access.
- Purpose built articulated mast
- Exceptional battery/shift life
- The most robust articulation unit with lifetime guarantee
- No guidance systems or expensive floors required

At the heart of every Bendi is the unique articulation system. Accumulated articulated knowhow since 1982 lead to the established and unrivalled articulation system of today, delivering industry best aisle performance, product and rack safety whilst also being the most robust and agile.

The Bendi Mast sets industry standards. So unique is the speed of operation and rotational forces with an articulated truck that 30 years ago we redesigned the traditional forklift mast to produce the worlds only dedicated mast for an articulated truck – this is standard with every Bendi.

– We’re so confident about these features that we give them a lifetime structural guarantee.

- Operates easily in 1600mm aisles
- Unique Safe Central Drive Style
- Lift capacities from 1200kgs to 2000kgs
- Low maintenance AC control & motors
- Purpose built articulated mast
- Exceptional battery/shift life
- The most robust articulation unit with lifetime guarantee
- No guidance systems or expensive floors required



# B3 Series



## Battery Electric Multi-Purpose Articulated Forklift trucks

Model				312	315	318	320
Capacity			kg	1200	1500	1800	2000
Load centre			mm	500	500	500	500
Power source				Traction Battery	Traction Battery	Traction Battery	Traction Battery
Unladen weight including battery			kg	6000	6800	6800	7800
Sideshift				Integral	Integral	Integral	Integral
Travel speed (adjustable)		Laden / Unladen	kph	11/12	11/12	11/12	12/14
Lift Speed		Laden / Unladen	m/s	0.4/0.5	0.4/0.5	0.4/0.5	0.4/0.6
Lower speed		Laden / Unladen	m/s	0.5/0.3	0.5/0.3	0.5/0.3	0.5/0.4
Tilt range		Fore/Rear	°	1/3	1/3	1/3	1/3
Overhead guard height	g		mm	2250	2250	2250	2250
Seat height	f		mm	1220	1220	1220	1220
Cab floor height	e		mm	700	700	700	700
Minimum ground clearance	d		mm	60	60	60	60
Lost load centre	a		mm	270	270	270	270
Overall length to face of forks/ inc rear forks	c/j		mm	2600	2700	2650	2700
Wheelbase	b		mm	1800	1800	1815	1840
Chassis width	k		mm	1150	1150	1270	1340
Maximum gradient			%	15	15	15	15
Rotation angle			°	220	220	220	220
Lift & steer motor			kW	8	8	8	8
Drive motor rating - AC			kW	8	8	8	8
Wheel size		Front / Rear	mm	400 x 200 / 460 x 180	400 x 200 / 460 x 180	406 x 180 / 460 x 185	406 x 180 / 460 x 185
Battery type, standard		620	Ah	7PZSH630	7PZSH630	8PZSH720	8PZSH720
Minimum battery weight			kg	970	970	1110	1050
Control type				AC	AC	AC	AC

### Mast Dimensions

Standard triple full free lift mast

Range	Lift Height	Free Lift	Closed Height	Extended Height	Lift Height
Full Range	5000 mm	1750 mm	2599 mm	5849 mm	5000 mm
Full Range	6000 mm	2117 mm	2966 mm	6849 mm	6000 mm
Full Range	7150 mm	2500 mm	3349 mm	7999 mm	7150 mm
B318 & B320 Only	8200 mm	3083 mm	3932 mm	9049 mm	8200 mm
B318 & B320 Only	9000 mm	3350 mm	4199 mm	9849 mm	9000 mm
B320 Only	10000 mm	3717 mm	4566 mm	10849 mm	10000 mm

### Aisle Dimensions

Load Depth x Width (j x i)	Minimum Clear Aisle
1000mm D x 1200mm W	1600 mm
1200mm D x 1000mm W	1800 mm
1200mm D x 800mm W	1800 mm
Minimum clear transfer aisle	2700 mm
Minimum end aisle clearance	750 mm

